



GEELONG WATERSKI CLUB

NEWSLETTER

OCTOBER 2007

Important Dates To

Remember

- **4th November 07**
Slalom League
- **11th November 07**
Ski School
- **18th November 07**
Working Bee
- **24th & 25th November 07**
Interclub Challenge
- **9th December 07**
Ski School and Christmas Party

Visit our new look website @

<http://www.gwsc.org.au/>

Thanks to Brad Jones at



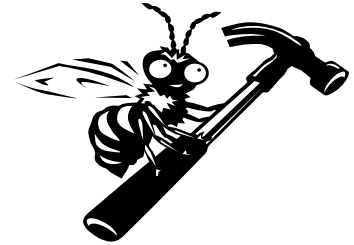
**DO YOU
WANT TO
ADVERTISE
YOUR
BUSINESS?**

**Contact the
Committee by mail
for details**



Working Bee #1

WHEN 18th November @ 9.00 am
WHERE Geelong WaterSki Club



With the start of the ski season and approaching our first club tournament a number of tasks are planned for this first working bee. These include

- Cleaning up start docks
- Maintenance of Judges Tower
- General Cleanup of Grounds

Presidents Report

Welcome to the season. We begin our year by hosting the InterClub Challenge. Hopefully we can retain the Klipspringer Trophy. To ensure our club is in pristine condition your support for the working bee will be greatly appreciated. When you attend ensure you sign the register. A BBQ will be provided at the conclusion.

Thankyou to boat, family, fishermen, dealers and individual members for payment of annual fees. Despite the windy weather the scrutineering day was completed. Thankyou to those members who brought their boats. Thanks also to Ray Perrett and Graham Horton for their work on the day and also to committee members for assisting with paperwork and the BBQ. A reminder to all members that the keys are exchanged on srutineering day and a new key can be collected when last seasons key is returned.

We still have a vacancy on the committee of management and would love to fill this ASAP. Please contact a current committee member if you are interested.

Until next newsletter, HAPPY SKIING.

Glenn Sheldon



FOR SALE



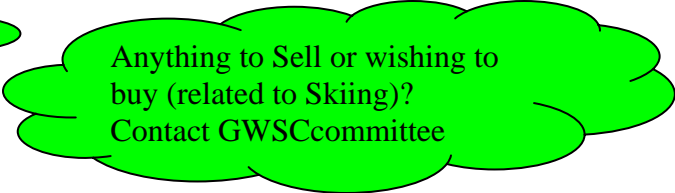
**2003 Malibu Response
\$42,000-00 neg.**

- White and green hull.
- Bimini cover
- Galvanized trailer with double axle and disc brakes
- Perfect Pass cruise control
- 310 Indmar engine.
- Only used in fresh water

Phone Richard or Sue 03 52 439 651

WANTED TO BUY

- Children's Bouyancy Vests
contact Andrew 5222 8119



Anything to Sell or wishing to buy (related to Skiing)?
Contact GWSCcommittee

Ski School 11th November 9.00am

Cost: \$10 per participant, includes coaching, BBQ and drink

Our first Ski school will be a great start to the season for our members. All ages and levels of skier are catered for. Please ensure you contact Graham Horton by 5th November to register so adequate coaches, drivers and catering can be organized.

Preference will be given to those who register.

Have you noticed?

Thanks to the Victorian Small Equipment Grants we now have a Safety Station. **The Rescue equipment is for use in emergencies only.**

The board includes

- Safety Notices
- Event Organization White Board
- Spinal Board and Straps
- Cervical Collar and Head Immobilizer
- First Aid Kit
- Pocket Mask

Are you interested in Aquatic Recovery?

Life Saving Victoria offers a four hour program to develop practical skill in spinal management during aquatic recovery. This includes the practical use of Spine boards and Cervical Collars.

We are considering offering this course at the club to interested parties. The cost is \$54 per candidate.

This includes

- Professional Training and Assessment
- Certificate of participation.

Please email the secretary at andrewadele@aapt.net.au if you are interested in participating.

Victorian Inter Club Challenge (Klipspringer Cup)

24th & 25th November @ 9.00am

The Geelong Water Ski Club Inc will again be hosting the Victorian Inter Club Challenge for the **Klipspringer** Perpetual Trophy. Skiers may enter in Club Teams or as Independents. Note only Bona Fide Victorian clubs may enter Teams. Check with Ian Chiron or Trevor Pratt to confirm your Club is on the list of current Victorian Clubs.

Skiers in the tournament must be members of the AWWF. Those that aren't currently members can make use of a special deal the AWWF has made for this tournament whereby they can become a member for the weekend for only \$25. There will be application forms available at the Geelong Club House.

Entry form is attached to this newsletter.

Rules of the competition can be found on the GWSC website.

Hi-Visibility Australia Slalom League

The highly successful Hi Visibility Australian Slalom League competition is on again.

Skiers who wish to enter are to put in a slalom score each week for 7 weeks from 4th November 2007 until 22nd December 2007. Final Scores must be in by 24th December. Their best 5 scores will count towards their league score. The Slalom League works on an honor basis and the skiers each email their own scores to richardcrisp@bigpond.com. Members at all levels are encouraged to participate in this handicap event. There is no entry fee.

Rules of the competition can be found on the GWSC website.

Refresh Your Memory!!!!

It is timely with the new ski season that we are reminded of some rules we are to abide by. These rules are there to make our club safer and comply with our many regulatory requirements.

- A visitor may be admitted up to 5 times during the course of a year. He/she must then apply for membership
- Boat Drivers must be financial members
- A member is restricted to 5 skiing visitors at any one time
- The main gate is to remain closed during the day to ensure members items remain safe
- It is the responsibility of the club member who is last to leave the club to ensure that
 - Club house, Storage shed and gate are locked
 - Gas bottle and lights are turned off
 - All windows are closed
- No dogs allowed on premises
- Boats must not be driven between jump and bank

A full list of Rules and regulations can be found on the GWSC website.

Committee Members

ROLE	NAME	TELEPHONE	EMAIL
President / Slalom Course	Glenn Sheldon	0419 296 222	image11@bigpond.com
Vice President / Slider	Ray Perrett	0417 799 073	
Treasurer	Tim Day	0409 511 745	timothykylie@optusnet.com.au
Secretary	Adele Holden	0418 522281	andrewadele@aapt.net.au
Club Captain	Graham Horton	0408 033 792	joshjade@gsat.net.au
Club House / Area	Darren Wiffen	0418 371 316	dlwiffen@optusnet.com.au
Slalom Course	Stephen Burns	0409 557 767	meatus@optusnet.com.au
Jump	Ashleigh Creek	0409 958 080	arcreek@bigpond.com
Social	Frances Gatfield	0407 040 877	fgatfieldimpala@bigpond.com.au